

RCD module  
 Chránivý modul  
 Chránivý modul  
 Blok różnicowoprądowy  
 Module différentiale atasabile  
 FI-Schutzblock  
 Bloc différentiels  
 Блок УЗО  
 ДТЗ блок  
 Modularna diferencialna zašitna sklopka

1

NOARK

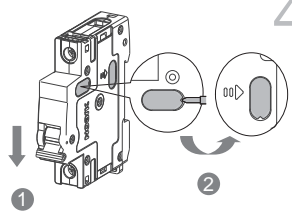
Mounting instructions  
 Montážní návod  
 Montážne inštrukcie  
 Instrukcija montažu  
 Istruzioni di assemblare  
 Montageanweisung  
 Instructions de montage  
 Инструкция по монтажу  
 Monteringsanvisning  
 Istruzioni di montaggio  
 Instrucciones de montaje  
 Összeszerelési útmutató

Asennusohjeita  
 Montage-instructies  
 Instrukções de montagem  
 Navodila za montažo  
 Οδηγίες Εγκατάστασης  
 Инструкция за инсталлиране  
 Monteringsvejledningen  
 Montažu upute  
 Surinkimo instrukcijos  
 Instalēšanas instrukcijas  
 Скупштина упутство  
 Paigaldusjuhendid

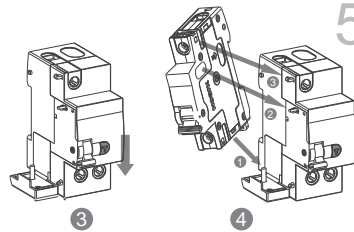
2

Caution: **Installation by electricians only**  
 Varování: Montáž pouze osobou s elektrotech  
 Varovanie: Montáž iba osobou s elektrotech.  
 Uwaga: Montaż tylko przez uprawnionych instalatorów  
 Atenție: Instalare numai de către electricieni  
 Vorsicht: Montagetur durch Elektrofachkräfte  
 Attention: Montage uniquement par un électricien  
 Осторожно: Монтаж только электрика

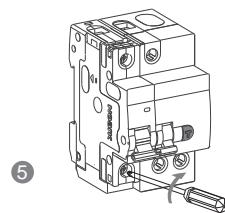
3



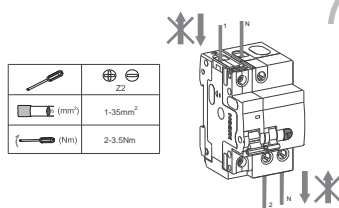
4



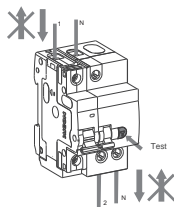
5



6



7



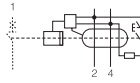
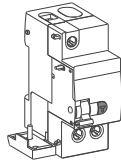
8

Test yearly  
 Testovať ročne  
 Testovať ročne  
 Test roczny  
 Test annual  
 Test jährlich  
 Test annuel  
 Испытание ежегодно

Ex9LE

1P+N

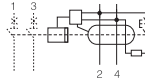
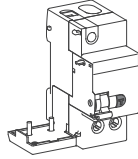
9



Ex9LE

2P

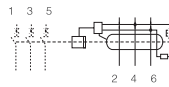
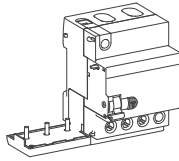
10



Ex9LE

3P

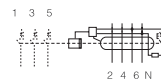
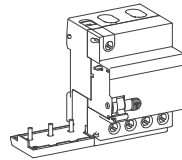
11



Ex9LE

3P+N

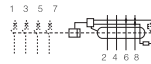
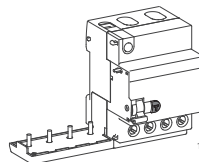
12



Ex9LE

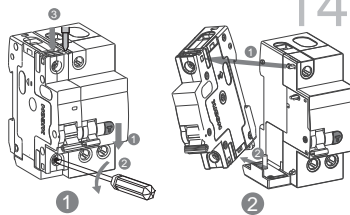
4P

13



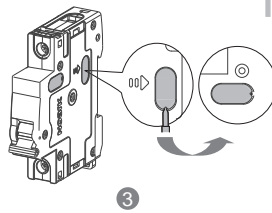
Ex9LE

14



Ex9LE

15



NOARK



Printed with environment-friendly paper

Copyright Noark. All Rights Reserved

www.noark-electric.eu