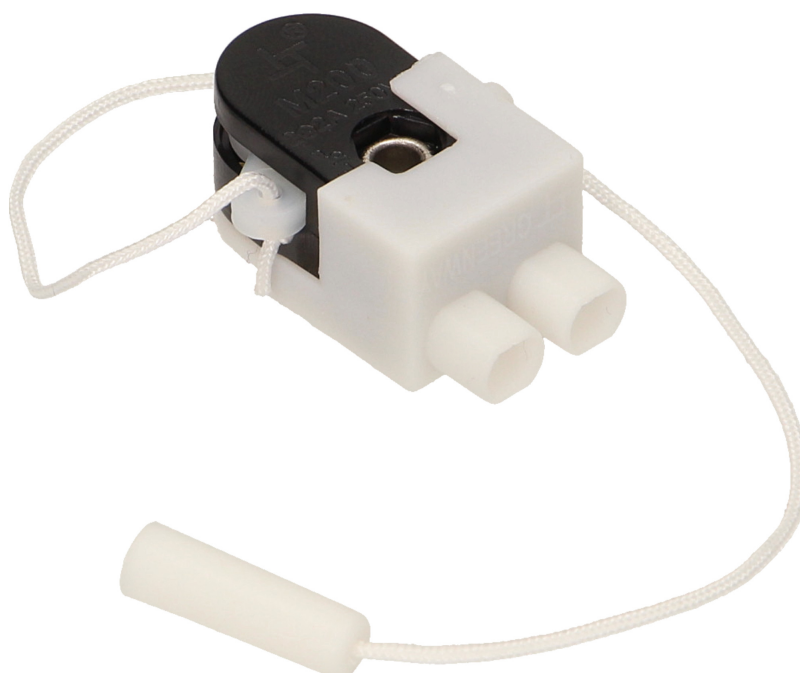


## Pull switch, 2A

Marka: Orno | Symbol: OR-AE-1326 | Ean: 5901752486591

**ORNO**


### PRODUCT DESCRIPTION

Electric switch in casing with the connector comprising a body with switching mechanism. It has two states: "On" during which current is conducted by the junction system, "Off" during which current is not conducted. The mechanism is controlled by the cord (string). Installation of the switch with lamps, fans and other electrical products.

## TECHNICAL DATA

### General information:

Nominal voltage:	230V~, 50Hz
Current:	OR-AE-1326 A
Colour:	white

